

# MONTHLY MEMBERSHIP PROGRESS REPORT

LOCATION TEXAS

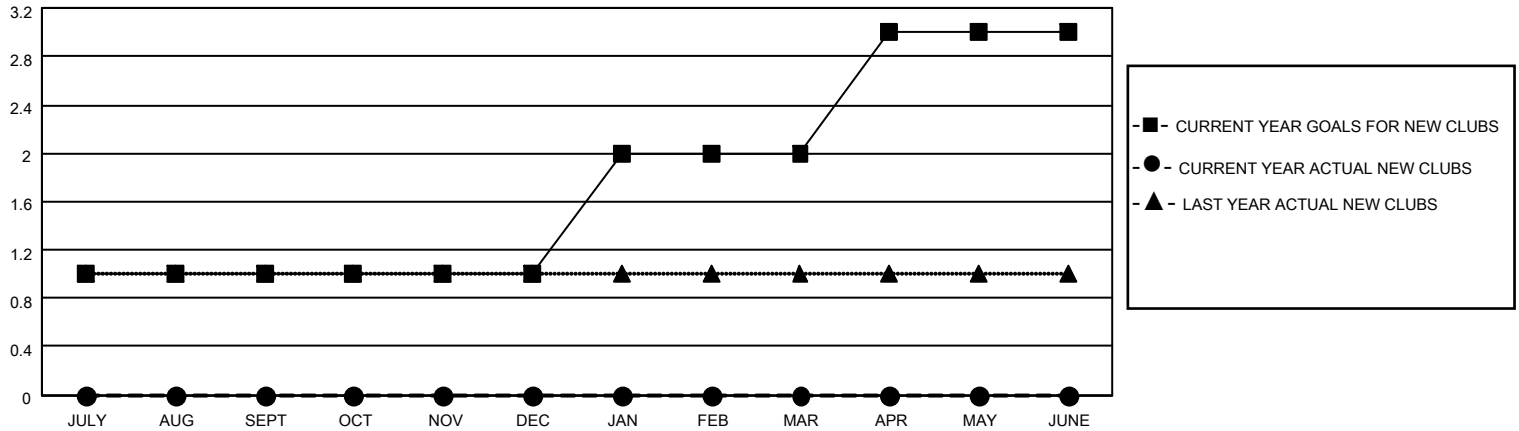
District 2 S3

Results as of: 1/31/2023

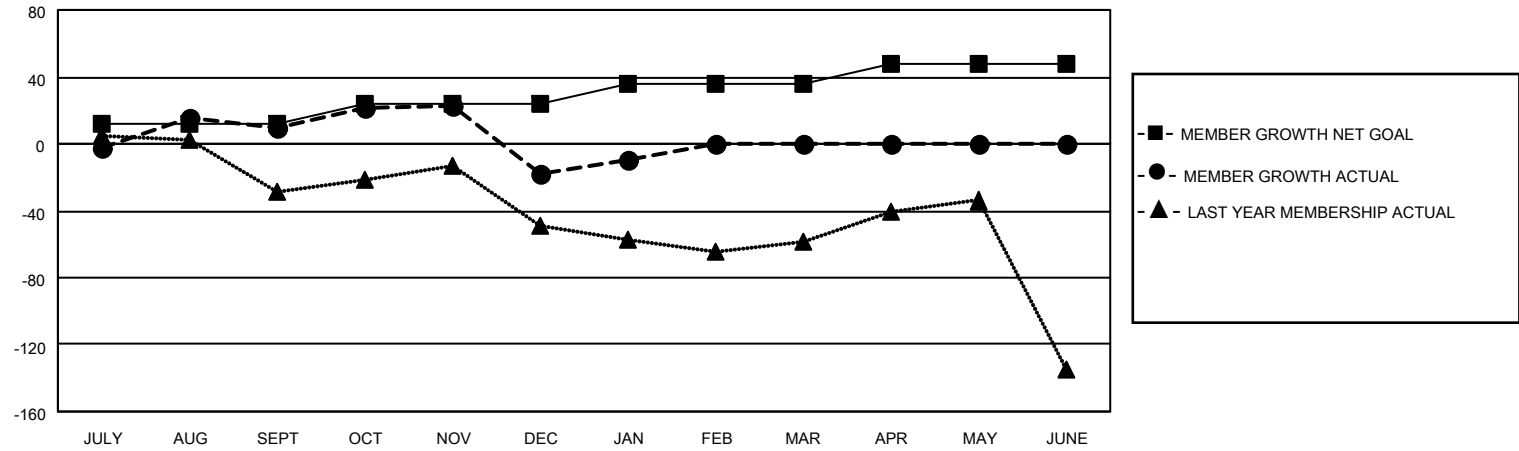
Clubs			
RESULTS FOR 2022-2023			
QUARTER	NEW CLUB GOAL	NEW CLUBS	DROPPED CLUBS
JULY/AUG/SEPT	1	0	1
OCT/NOV/DEC	0	0	0
JAN/FEB/MAR	1	0	0
APR/MAY/JUNE	1	0	0

Members			
RESULTS FOR 2022-2023			
QUARTER	MEMBER GROWTH NET GOAL	MEMBER GROWTH ACTUAL	DROPPED MEMBERS ACTUAL (including transfers)
JULY/AUG/SEPT	12	83	61
OCT/NOV/DEC	12	53	74
JAN/FEB/MAR	12	33	20
APR/MAY/JUNE	12	0	0

**GOALS AND ACTUAL NEW CLUBS CUMULATIVE**



**GOALS AND ACTUAL MEMBERS CUMULATIVE**



<b>DROPPED CLUBS: 1</b>	
<b>DROPPED MEMBERS</b>	
DECEASED	5
CLUB CANCELLED	13
OTHER	137
<b>TOTAL</b>	<b>155</b>

28 CLUBS OF 49 ADDED 1 OR MORE NEW MEMBERS

[CLICK HERE FOR CUMULATIVE MEMBERSHIP DATA](#)

<u>GENDER DISTRIBUTION</u>	
MALE	1,047 (61.88%)
FEMALE	643 (38.00%)
NON BINARY	1 (0.06%)
PREFER NOT TO ANSWER	1 (0.06%)
<b>TOTAL FAMILY UNIT MEMBERS</b>	<b>296</b>
<b>FAMILY MEMBERS PAYING HALF DUES</b>	<b>151</b>